

**MARTIN ENTERPRISES IS A MEMBER OF:**

DSS Success Team Committee  
NC Works Partners  
Martin County Chamber of Commerce  
Pitt County Chamber of Commerce  
Martin County Committee of 100  
Martin County Rotary  
North Carolina Association of Rehabilitation Facilities (NCARF)  
NC Association for People Supporting Employment First (NCAPSE)  
Williamston Community Garden (WCG)  
Choanoke Area Development Association (CADA)

**MARTIN ENTERPRISES IS CARF ACCREDITED FOR THE FOLLOWING SERVICES:**

Supported Employment (SE)  
Work Adjustment (WA)  
Vocational Evaluation (VE)  
Production Work  
Community Living Facility Support (CLFS)  
Innovations-I/DD Waiver  
Psychosocial Rehabilitation Services (PSR)

**CARF is a private not-for-profit national accreditation organization that promotes quality rehabilitation services.**



**MARTIN COUNTY RESIDENTIAL SERVICES, INC.**

**D/B/A MARTIN ENTERPRISES**

P.O. Box 1042, Williamston, NC 27892

Tel: (252) 792-8251 ~ Fax (252) 792-5283

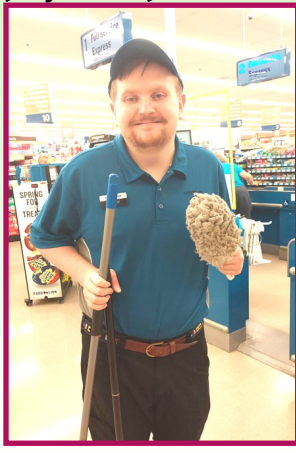
Website: <http://www.martinenterprises.org>

**MISSION STATEMENT**

To provide opportunities, training, and supports for individuals, to assist them in becoming as independent as possible at home, at work, and in the community.

# Martin Enterprises

July '22—June '23



2022~2023

Annual Report

Martin Enterprises' Vocational Rehabilitation department is committed to helping socially, developmental, or physically challenged consumers find jobs. If you or your company is interested in receiving services through the Vocational Rehabilitation Program at Martin Enterprises, please contact Becky Bullock, Executive Director/CEO at (252) 792-8251. We look forward to serving you or your company's needs in the future.



**MARTIN ENTERPRISES**, during fiscal year 2022-2023, operated an Adult Developmental Vocational Program, a Community Living Facility Support program, two group homes, a Vocational Rehabilitation Services program, an Innovations-I/DD Waiver program, and Psychosocial Rehabilitation Services.

**BOARD OF DRECTORS:**

George C. Griffin III, President  
Gail Keel, Vice President ~ Hilda Bussell, Secretary/Finance Officer  
Susan D. Dunlow ~ Stephanie Irvine  
Bernadette Rodgers ~ Tommy W. Bowen  
Becky Edwards ~ Simon Griffin  
Larry Biggs

**NUMBERS SERVED**

|   |      |
|---|------|
| Total clients served by Martin Enterprises                  | 119  |
| Day Support   | 2    |
| Innovations-I/DD Waiver                                     | 15   |
| Group Home  | 12   |
| Psychosocial Rehab (PSR)                                    | 8    |
| Community Living Facility Support (CLFS)                    | 18   |
| Number of Referrals obtained from Vocational Rehabilitation | 23   |
| Vocational Evaluation (VE)                                  | 0    |
| Work Adjustment (WA)  | 10   |
| Long Term Support (LTS)                                     | 2    |
| Supported Employment (SE)                                   | 6    |
| Overall Referral Source Satisfaction Rating                 | 100% |
| Overall Employer Satisfaction Rating                        | 100% |
| Overall Consumer Satisfaction Rating                        | 100% |

Throughout the **2022-2023** VR fiscal year **16 clients** were job ready after going through our program and placed on various jobs in the community ( 10 WA and 6 SE). The following businesses/industries hired one or more of our clients during this time period: Perdue Farms, Pizza Hut, Food Lion, Roses, SpinRite, Ridgewood Manor, Carrolton of Williamston, QVC, and Truly Blessed Transportation Inc.

**PRODUCTION**

**PRODUCTION YEAR IN REVIEW:**

During our 2022-2023 fiscal year, Martin Enterprises completed sub-contract work for several companies and sold recycled and baled corrugated material to Carolina Fibre of Greensboro. The following is a snapshot of the year:

|                  |                                      |           |
|------------------|--------------------------------------|-----------|
| <b>Perdue</b>    | Padded poultry trays                 | 3,950,400 |
| <b>Penco</b>     | Cut wax sheets                       | 85,922    |
| <b>Cardboard</b> | Recycled and baled tons of cardboard | 114.20    |
| <b>Fastenal</b>  | Assembled locker hardware kits       | 4,635     |
| <b>Demis</b>     | Assembled point of sale displays     | 3,416     |

Martin Enterprises operates a recycling center for the collection and processing of corrugated materials. In addition to the obvious environmental benefits, this center provides local industries, businesses, and residents a considerable financial incentive to recycle corrugated material instead of depositing it into the county landfill.

**REVENUES FOR THE FISCAL YEAR:**

|                                       |     |
|---------------------------------------|-----|
| <b>Revenues</b>                       |     |
| <b>State and Federal Revenues</b>     | 69% |
| <b>Contract Sales</b>                 | 13% |
| <b>County Appropriation</b>           | 1%  |
| <b>Other unrestricted Allocations</b> | 17% |