



Providing opportunities, training, and supports for individuals to assist them in becoming as independent as possible at home, at work, and in the community.

Subcontract Services

- Simple Assembly
- Packaging
- Sorting



Job Placement

- Individualized Training
- No Cost Employee Assistance

WE CAN SAVE YOUR BUSINESS MONEY, TIME, & SPACE

Promotional Items
Screen Printing
Awards



PO Box 1084 - 23366 Highway 125 N., Williamston, NC.
Phone: 252-789-0508—Fax: 252-789-0775
Website: www.htmconceptsofmartinenterprises.com

Embroidery
Signage
Gifts

Martin County Residential Services, Inc.
DBA Martin Enterprises
PO Box 1042
Williamston, NC 27892

2nd Quarter 2018

April-June



ARC AND UCP GROUP HOMES

This quarter, ARC and UCP residents attended a dedication service at The Way of Holiness Church. The residents also attended a “Parade of Hats” at Cornerstone Baptist Church where they learned about the history of the different hats that women wear. The residents had an awesome time at the “Friends and Family Day” celebration at Smithwick Chapel.

The residents enjoyed outings to “Music in the Park” in Robersonville, shopping at the Poor Man’s Flea Market in Washington, going to the “Disabled Fun Fair” at the Koinonia Church in Greenville and the “Black Bear Festival” in Plymouth, and celebrating 45 years at the “Seniors’ New Jamboree Prom” in Washington. We cannot wait to tell you what these social butterflies are doing next, but I suppose we have to wait until next quarter.

MUSIC IN THE PARK



USPS STAMP OUT HUNGER FOOD DRIVE



SENIORS' NEW JAMBOREE PROM



KOINONIA DISABLED FUN FAIR



BLACK BEAR FESTIVAL



LUNCH IN THE PARK



Spring VOCATIONAL REHABILITATION

This Quarter we have accumulated fourteen Work Adjustment placements and four Supported Employment placements. Home Life Care, Ahoskie House, Perdue Farms of Lewiston, IDX-Impressions, Dollar General of Williamston, and Lowes of Washington have contributed to our success for the current quarter. A special thank you is extended to all employers that have aided our consumers in obtaining employment.

Our monthly VR client meetings continue to play an important role in preparing individuals for work. Each month at the client meetings a worker is selected for Worker of the Month based upon excellence in attendance, productivity, cooperation, attitude, and behavior. The WRAP program out of Greenville continues to provide innovative ideas for seeking employment and motivating our clients.

If you or your company is interested in receiving services through the Vocational Rehabilitation Program at Martin Enterprises, please contact Sonona R. Jefferson, VR Services Manager at (252) 792-8251. We look forward to serving you or your company's needs in the future.

Welcome, Tameika Bell, our new Program Assistant!



Becky Bullock
Executive Director

Board of Directors

George Griffin, III
President

Gail Keel
Vice President

Hilda Bussell
Secretary/Finance Officer

Tommy W. Bowen

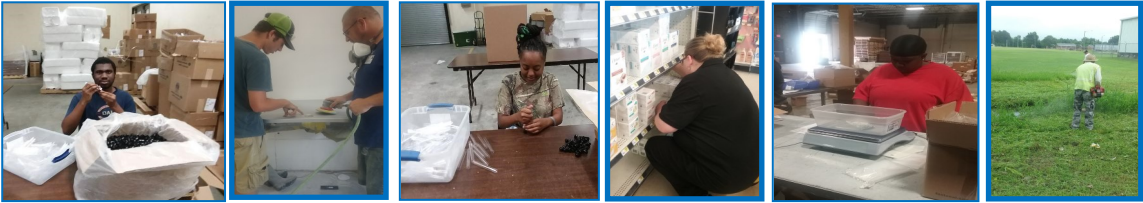
Susan Dunlow

Becky Edwards

Simon Griffin

Stephanie Irvine

Bernadette Rodgers



APRIL	YEARS OF SERVICE	MAY	YEARS OF SERVICE	JUNE	YEARS OF SERVICE
Eric Manning	20	Debbie Bunn	10	Jacquelyn Bell-Shiver	6
Milton Bryant	19	Latonya Lassiter	1	Brett Holley	4
Terrie Brown	10			Deborah Davenport	4
Reggie Peele	6				
Susan Daughtry	6				
Meghan West	5				
Vincent Burns	3				
Angela Duggins	1				
Lionel Smallwood	1				

2018	Perdue	Hampton Art	Cardboard	Ann's House of Nuts	Fastenal Kitting
Apr.	604,040	21,408	21.75	0	349
May	748,870	16,515	21.51	234	425
Jun.	638,100	44,180	44.00	30	440
2nd Qtr.	1,991,010	82,103	87.26	264	1,214
	Poultry trays	Tubes of beads	Tons of Card-board	Assembled and packed displays	Kits assembled

MARTIN ENTERPRISES' SPONSORSHIP FOR THE CHAMBER OF COMMERCE'S ROANOKE DERBY



CLFS, PSR, & INNOVATIONS

This quarter, clients went to The Painted Peacock in Greenville. The clients painted beautiful arts and crafts while they socialized and then enjoyed lunch at CiCi's Pizza. In May, the clients visited J&J Farms to pick strawberries. After picking their fill of strawberries, the clients enjoyed lunch in the park with their strawberries for dessert.

ARTS & CRAFTS AT THE PAINTED PEACOCK



AN AFTER LUNCH WALK IN THE PARK



BBQ CHICKEN PLATE FUNDRAISER



EASTER CELEBRATION



DEMENTIA PRESENTATION BY LATONYA JENKINS OF THE MTW DISTRICT HEALTH DEPARTMENT



NEW GARDEN PLANTED BY CLIENTS



The less you respond to negative people, the more peaceful you will become.

-ME Client